

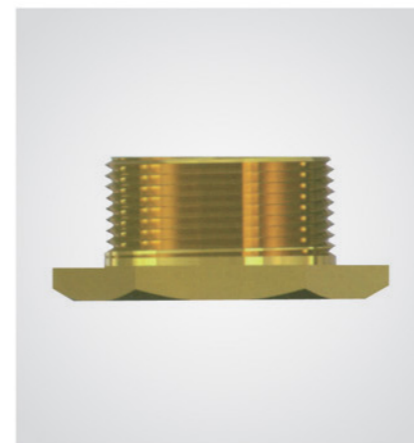
TG-船标·管式

BJ-公制外螺纹大/内螺纹小

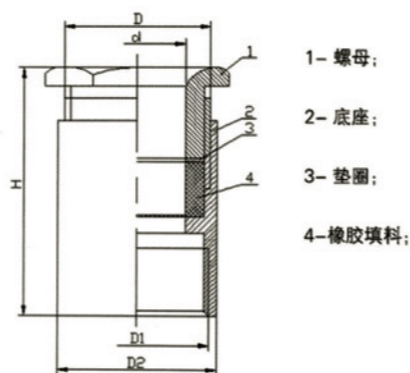
填料函 Cable gland 变径接头 reducer union



材质 Material	黄铜与碳钢或其它材质 (订货时请指明) Brass and steel or other materials (When ordering, please specify)		
特点 Features	适用于各种普通电缆 Applicable to all kinds of ordinary cable		
密封件 Seals	丁腈橡胶(NBR) NBR	防护等级 Degree of protection	IP56
工作温度 COT	-40°C~100°C		

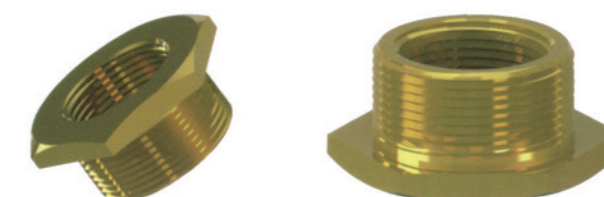
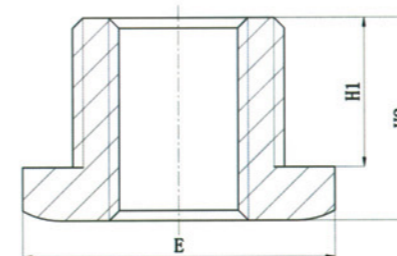


材质 Material	黄铜、黄铜镀镍或不锈钢 (订货时请指明) Brass, brass nickel plated or stainless steel (When ordering, please specify)		
特点 Features	适用于螺纹转换或需变径的场所 Suitable for thread conversion or reducing place		
工作温度 COT	-60°C ~ 100°C		



1、可选附件：锁紧螺母、O型圈、平垫圈、锯齿垫圈、接地片

1、Optional accessories: reducer union ;lockion nut,O Ring,flat washer,serrated washers,sheath,grounding



订购示例 (e.g.): TG24

单位:mm

规格型号 Gland size	d	D	D1	管子公称口径 Nominal diameter	D2	H	适用电缆外径 Cable size
TG8	8	M16X1	G3/8	10	20	52	5-7
TG13	13	M20X1	G1/2	15	25	55	6-12
TG16	16	M27X1.5	G3/4	20	31	58	11-15
TG19	19	M30X1.5	G1	25	37	59	14-18
TG24	24	M36X1.5	G1-1/4	32	48	63	17-23
TG28	28	M42X2	G1-1/4	32	48	66	22-27
TG34	34	M48X2	G1-1/2	40	54	69	26-33
TG42	42	M56X2	G2	50	66	72	32-41
TG50	50	M64X3	G2-1/2	70	82	76	40-49
Tg58	58	M72X3	G3	70	82	76	48-57

订购示例 (eg): BJ-M32×1.5/M25×1.5

单位:mm

规格型号 Gland size	外螺纹 external thread	内螺纹 internal thread	H1	H2	E
BJ-M16×1.5/M12×1.5	M16×1.5	M12×1.5	12	15	26
BJ-M20×1.5/M16×1.5	M20×1.5	M16×1.5	12	15	32
BJ-M25×1.5/M20×1.5	M25×1.5	M20×1.5	12	15	34
BJ-M32×1.5/M20×1.5	M32×1.5	M20×1.5	12	15	43
BJ-M32×1.5/M25×1.5	M32×1.5	M25×1.5	12	15	43
BJ-M40×1.5/M25×1.5	M40×1.5	M25×1.5	12	15	57
BJ-M40×1.5/M32×1.5	M40×1.5	M32×1.5	12	15	57
BJ-M50×1.5/M32×1.5	M50×1.5	M32×1.5	12	15	69
BJ-M50×1.5/M40×1.5	M50×1.5	M40×1.5	12	15	69
BJ-M63×1.5/M40×1.5	M63×1.5	M40×1.5	12	15	80
BJ-M63×1.5/M50×1.5	M63×1.5	M50×1.5	12	15	80
BJ-M75×1.5/M50×1.5	M75×1.5	M50×1.5	12	15	98